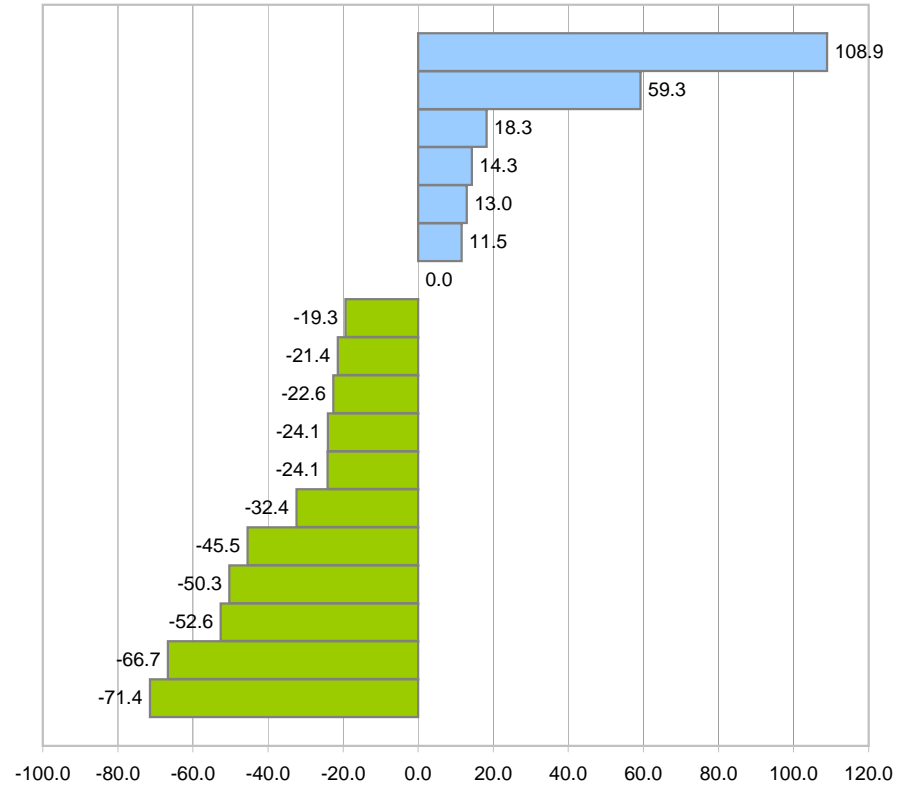


Evolution of Cancer Mortality in Switzerland between 1988 and 2007

	Deaths 2007	Difference 1988-2007 (%)
All cancers	16022	-12.8
Lung (females)	997	108.9
Liver, bile duct	648	59.3
Pancreas	1026	18.3
Melanoma	304	14.3
Brain	458	13.0
Esophagus	440	11.5
Multiple myeloma	323	0.0
Prostate	1260	-19.3
Uterus, ovary	662	-21.4
Colon	1214	-22.6
Bladder	451	-24.1
Lung (males)	2012	-24.1
Breast	1276	-32.4
Cervix uterus	91	-45.5
Stomach	542	-50.3
Larinx	71	-52.6
Testis	16	-66.7
Hodgkin's disease	27	-71.4



Source: Swiss Federal Statistical Office, Neuchâtel

