

ISREC

Fondation Recherche Cancer



Annual Report 2019

Acknowledgements

At the close of this year, we wish to express our deepest gratitude to all our generous donors, without whom none of our projects could have been carried out.

Special thanks to Prof. **Francis-Luc Perret**, Director, **Aylin Niederberger**, Managing Director, **Nathalie Blanc**, Administrative

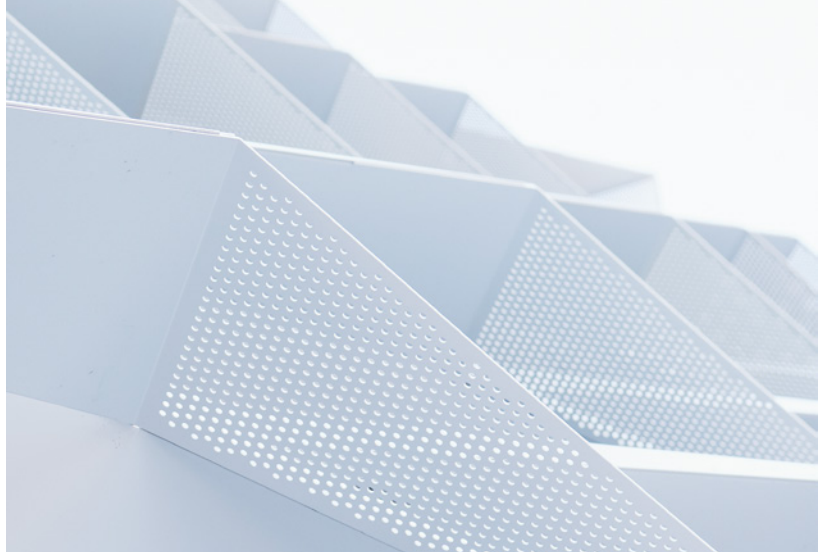
Assistant, **Isabelle Schiess**, Reception Desk Assistant, as well as to our ambassadors, **Didier Grobet** and **Jürg Kärle**, for their faithful commitment.

You have all contributed to the development and success of our Foundation, and your support is greatly appreciated. Thank you!

Cover

Temps Suspendu 2019 by Etienne Krähenbühl

The installation stretches between life and death like a molecular tissue. The delicate threads that connect us to life convey the wonder of our human existence. The threads of life weakened by illness retain their bonds and underline the human condition. **Struggle, research and solidarity**, symbolized by these contrasting materials between lightness and gravity, unite for Life.



Contents

Editorial: Coordination Tasks on the Agenda After the Inauguration	4 — 5
A Message from the President of the Foundation Council	
The Foundation's Missions	6 — 7
Our Lines of Action / A Few Figures	
AGORA — Pôle de recherche sur le cancer	8 — 13
The AGORA Center comes to life	
Conversation with Prof. Solange Peters	14 — 18
Interview	
The MD-PhD Program	19 — 21
Interview with Arnaud Bakaric	
Highlights in 2019	22 — 25
A Closer Look at the Events of the Past Year	
Supported Projects	26 — 31
The Foundation's Bodies	32 — 33
Donors	34 — 35

Catherine Labouchère

President



2019: Coordination Tasks on the Agenda After the Inauguration

2019 will be remembered as the year of development and coordination between all AGORA partner institutions.

For the ISREC Foundation, this implied presence and alertness on a daily basis to guarantee best possible operating conditions. Research teams gradually took over their labs. Staff members moved into their offices and sophisticated technological platforms were launched - a veritable scientific ballet in multiple acts. AGORA has become a building filled with life, as exemplified by the cafeteria which has turned into a place where people meet, mingle and speak countless different

languages. The exchange to which the Foundation has always committed itself is tangible.

At the heart of AGORA are the many people who strive to discover the best possible ways to defeat cancer, a multi-faceted disease which still ranks top of the list of health challenges. Translational research, starting in the test tube and ending at the patient's bedside, represents the DNA of the Foundation's missions. It ensures that patients not only benefit from discoveries and improvements in their treatments, but also receive all the attention they deserve during their fight against cancer.



In the Foundation Council, Prof. Andreas Tobler took up his position at the beginning of the year, while Prof. Pierre-François Leyvraz finished his term as a member at the end of December. I would like to take this opportunity to express my sincerest thanks to both of them, as well as to the other members of the Council, all of them committed to the implementation of the Foundation's missions.

My gratitude also goes to the Foundation's management and staff who, during this pivotal period, have spared no effort to ensure the achievement of the Foundation's goals, despite the fact that their tasks have

increased significantly since the opening of the AGORA cluster.

My very special thanks go to the donors who, over the years, have placed their trust in us with repeated conviction. I wish to assure them that their support is used to the best of our ability, so as to achieve the goals of the Foundation to which they have subscribed.

Catherine Labouchère
President

THE FOUNDATION'S MISSIONS

Supporting Translational Research

The ISREC Foundation identifies, selects and supports concrete projects that promote knowledge transfer and collaborations between basic research and clinical applications. The aim is to establish novel diagnostic and therapeutic approaches to study cells and their interactions with the environment. In doing so, it becomes possible to act on the causes of dysfunctions leading to cancer.

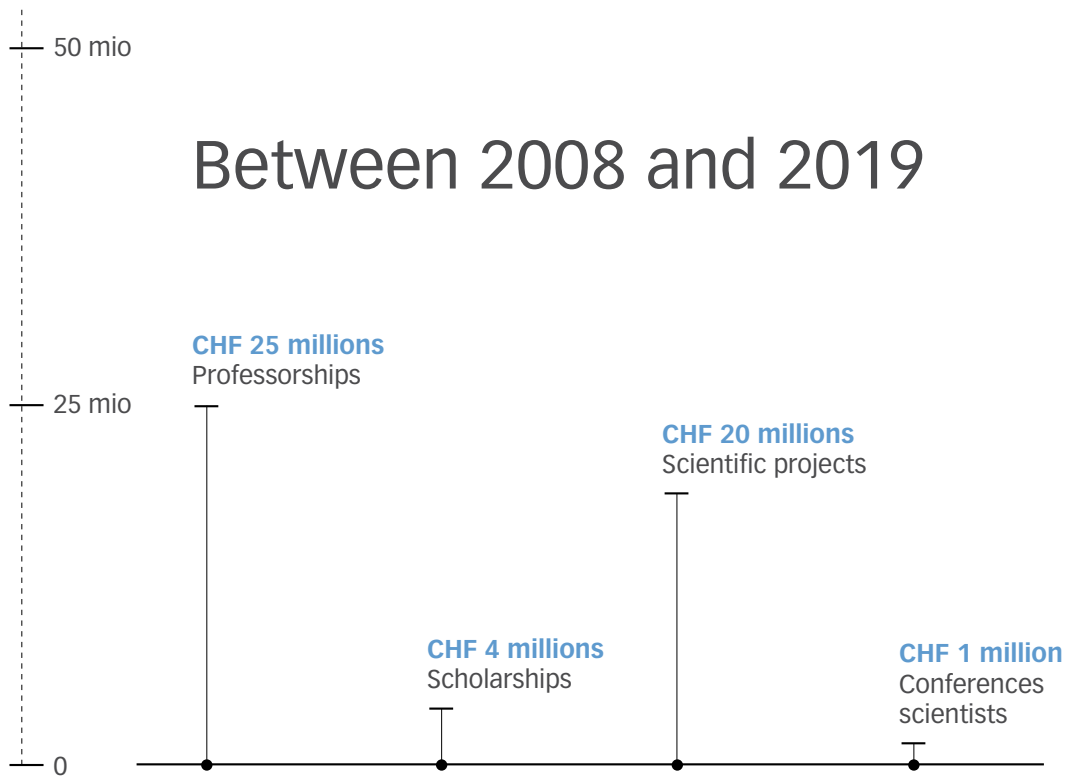
Supporting Young Scientists

The ISREC Foundation grants scholarships to students, PhD candidates and scientists working in the fields of biology, technology or medicine, and whose work is focused on immunology and oncology.

Founded on June 18, 1964, the ISREC Foundation is a private non-profit foundation. In the last more than 55 years, approximately 150 personalities from Switzerland and abroad, including five Nobel Prize winners, have sat on the Foundation Council or the Scientific Board of the ISREC Foundation. The institute has supported significant research projects and discoveries, notably in the areas of mutagenesis, genome instability and repair, immunology, immunotherapy, the cell cycle, cell biology, tumor virology, oncogenes, cell differentiation and bioinformatics. Since several decades, the work accomplished by scientists and supported by the Foundation contributes to a better understanding of the mechanisms underlying cancer and to the identification of novel therapeutic targets.

Today, the establishment of the AGORA cancer research cluster marks a new stage in the convergence of scientific research and medicine, and will undoubtedly open up new perspectives for many scientists.

In 2019, true to its topmost mission, which is to support cancer research, the Foundation granted scholarships to the UNIL and EPFL



In **2019**, the ISREC Foundation funded **6** student scholarships, **2** professorships, **11** research projects in the areas of medical and translational oncology, and supported **7** students participating in the «Summer Research Program». Between **2008** and **2019**, the ISREC Foundation dedicated **25 million** Swiss francs to promising young professors and more than **20 million** to translational and medical cancer research projects. **4 million** Swiss francs were allocated to the education of young people and the training of junior scientists. **1 million** was spent on summer programs, symposiums and scientific conferences.

doctoral programs. Funds were also allocated to several cancer research projects in various Swiss academic institutions. Some of these projects are directly dedicated to patient well-being. Finally, as every year, the Foundation supported students attending the UNIL/EPFL summer program, hopefully awakening new callings in these young scientists.

The many successes that make up the history of cancer research as well as the statistics of recent years show encouraging results. It is in this spirit that our Foundation pursues its missions.

THE AGORA CENTER COMES TO LIFE

In 2015, the ISREC Foundation ventured to invest a substantial part of its resources in the building of a real estate infrastructure intended to become a research center located as close as possible to the patient and the hospital campus.

It was a bold step to leave the scientific and academic environment focused on cancer research, in order to concentrate on the architectural design, negotiations with the builders and the management of the construction of a building that needs to meet the highly demanding requirements of translational research.

Let's dare to say it: the detour was worth the effort and the initiative is a success! The center is beautiful and efficient. Congratulations to the architect!

The building is pleasant, and the researchers and clinicians who work here enjoy their bright laboratories with a view of the city.

An emblematic work of art brings the atrium to life. Expensive equipment is shared by the scientists, and sharing is done with a smile. Physicians mix with bioinformaticians. Scientists working in basic research consult clinicians.

New and unexpected projects are born from interdisciplinary exchanges: people discuss research, diagnoses and therapies, but also talk about patients, family and well-being. Research is becoming more human...

Thus, despite the AGORA real estate project, the ISREC Foundation's missions have not gone astray. On the contrary: they have been reinforced!

From now on, the members of the Foundation Council and the Scientific Board as well as the Foundation's staff can physically meet the researchers, visit the laboratories, concretely check the evolution of a research project and the growth of a team benefiting from special support.

The AGORA center is thus becoming a true agora: a place of exchange and human, intellectual and social enrichment, dedicated to the search for therapies, practices and actions that will allow patients to live the best possible life.

Prof. Francis-Luc Perret
Director



ISREC — The AGORA Center comes to life



**Laboratories**

Today, the AGORA labs are occupied by scientists from the partner institutions UNIL, CHUV, EPFL, LICR, HUG and UNIGE.







INTERVIEW WITH SOLANGE PETERS



PROFESSOR SOLANGE PETERS

Head of the Medical Oncology Department at CHUV and in charge of the specialized consultation hours for thoracic tumors, Professor in the UNIL Faculty of Medicine, President of the European Society for Medical Oncology (ESMO).

Prof. Peters is a medical oncologist and a biologist who performs her duties with passion and commitment. She spares neither time nor effort to care for her patients and their families, while at the same time paying particular attention to her teams, who can count on her support under all circumstances.

In July 2019, the American GO2 Foundation presented Prof. Peters with the prestigious Bonnie J. Addario award for her incessant commitment to the fight against lung cancer, and in particular for her research in the areas of biomarkers, improving access to care and promoting women in oncology.

According to the latest publications of the Federal Statistical Office (2017), cancer is the second leading cause of death in Switzerland. However, every second person suffering from cancer is now on the road to recovery. Is there, in your opinion, hope for further improvement?

These figures are in line with global statistics. The two major international reports, those of the World Health Organization (WHO)¹ and the International Agency for Research on Cancer (IARC)², give the numbers by country and region. The main conclusion in both documents is that unless prevention is addressed, the number of cancer cases

1. www.who.int
2. www.iarc.fr
3. European Society For Medical Oncology

will increase uncontrollably between now and 2040, possibly at a faster pace than that expected as a pure result of demographics. For the first time, these reports highlight the impact of our lifestyles on the spread of the disease. They raise the question of how many cancers could be prevented by changing our lifestyle. Statistically, one third of all cancers may be linked to our behavior. Simple cross-cutting changes in some of our lifestyle habits, i.e. consumption of tobacco, alcohol, processed foods and excess meat, sedentary lifestyle, or the influence of our immediate environment, such as the effects of pollution, could reduce the number of cancer cases. The importance of improving preventive measures must mobilize all of us.

In developing countries, viral infections such as hepatitis for liver cancer, AIDS for AIDS-related cancers or the papillomavirus for cervical cancer are the cause of more than 25% of all cancer cases. These are simple infections, for which vaccines and treatments are available, but which nevertheless degenerate into cancers because they cannot be treated on time.

In its report, the WHO emphasizes the responsibility of society (more than the responsibility of the individual, in my opinion) in the development of cancer. Obviously, this issue also concerns Switzerland. Despite its status as a wealthy country, prevention is not necessarily easy to implement. As they are expensive, not all lifestyle changes described above are accessible overnight to all social classes. However, it is essential for Switzerland to improve its position regarding the two main cancer-causing factors, namely alcohol and tobacco. In a society in which the impact of these factors is considerable, it is essential that our authorities commit to impeding access to these commodities, for example by means of public taxes or a ban on all public advertising. At festivals, people of all ages are still offered

cigarettes or invited to try new tobacco gadgets (electronic cigarettes), without any age verification. I have to admit that some of my foreign colleagues were shocked when they came to Switzerland. Compared to our Australian and American colleagues, we Swiss are very bad in this respect. For the first time this year, the WHO and the IARC have taken an interesting stance by classifying cigarettes and substitutes such as e-cigarettes on the same level because of their attractiveness for young people (taste, fashion and addiction).

What I am trying to say is that cancer prevention can be tackled more effectively, by applying simple measures, without necessarily having to correct the social inequalities that are often pointed out when speaking about prevention.

From a political point of view, the people who represent these markets in Switzerland are probably over-represented in the decisive political bodies. As a physician, it is my duty to repeat the message: we need drastic measures. Anything that creates these addictions and anything that leads to an increase in cancer cases must simply be banned from advertising. No one who works in a medical profession can distance him or herself from these prevention messages.

The ISREC Foundation places the patient at the heart of its mission, especially since the establishment of AGORA, a multidisciplinary research center in the heart of the hospital campus. In your opinion, what changes can the patients expect?

When we discussed the future and our vision in the European Society for Medical Oncology (ESMO) more than five years ago, we sought to identify the most important advances needed in the field of oncology. The most obvious one is sustainability, in other words, how can we maintain the societal,

long-term effects of our actions and accessibility to optimal care. Next up is medical training. How can we ensure that all physicians are adequately informed regarding all cancer types? And the most difficult aspect is interprofessional practice and education, i.e. multidisciplinary.

In order to move forward in research, the different specialists must talk to each other. This dialogue must take place between physicians, but also between different professionals such as nurses and researchers. In large hospitals, where scientists often work far apart, this is a very complex process. The aim of AGORA, as was very well explained in the ISREC Foundation's message, is to try to go against this natural mechanism in order to bring together all the main actors in the same building. I find the AGORA concept fascinating. In this center you can meet scientists dedicated to basic and translational research, but also people working in the «patient laboratory» who devote themselves to studying the patients' experiences and their care. This brings me back to the training of specialists. What could be better than these encounters and interactions to exchange ideas and build a common vision? I hope AGORA can serve as a model that can be adopted by other major universities.

This is precisely the idea we had, and you have expressed it very concretely.

One might indeed ask oneself why we need an additional building. AGORA is located at the heart of the hospital campus and contributes to achieving our goal, which is to bring together skills and ultimately to improve patient care.

Today the onco-immunological approach complements conventional therapies. What hopes are associated with these new treatments? Will patients be able to afford these therapies?

Three important aspects of these immunotherapies need to be taken into account, one of them being positive and two negative.

On the positive side, the term «progress» is often used when speaking of immunotherapies. Hope is concrete for some patients for whom these treatments might represent a prolongation of their life, or even potentially a cure. Please notice that I regularly use the word «some», as not necessarily all patients can benefit from these therapies.

The first negative point is that, as is true for any therapeutic progress, the enthusiasm that is created by these treatments often runs ahead of the rationality that allows us to make decisions. Even in pharmaceutical companies, some drugs are developed too quickly. This means that huge studies are set up even before the patients who should receive the drug first or exclusively have been identified. We are still in the process of refining and trying to understand which patients may benefit from immunotherapy, as this remains a good solution for some of them. But it is essential to better understand what exactly is being done, and this will take time.

The second negative aspect can be formulated as follows: can we afford these therapies? In my opinion, we still can in Switzerland, provided we are able to better define who should receive these new treatments. This is where science comes in. The better we learn to identify the «right» patients, the less likely we are to waste resources. This does not mean, of course, that nothing will be done for other patients. These will receive other treatments. Research is progressing rapidly, and the more precisely we work, the more likely we are to do the right thing. In Switzerland, the emphasis today is on precision, because adequate funding allows us to conduct the clinical trials that will bring us these answers.



One of the ISREC Foundation's main missions is to support young scientists and academics. You are a professor and head of department at UNIL. What is your vision for the training of young doctors and nurses? How can we convey the prevention message to this new generation?

I believe this training mission is extremely important, and it reveals a sensitive point. Among the members of your Scientific Council is Prof. Fabrice André, a renowned researcher and head of research at the Gustave Roussy institute. When present at

ESMO³, he often expresses his concern regarding the identification of young talented academics, whom he calls «rising stars». Ten years ago, this was not a problem. But today we live in a world in which the requirements related to advanced academic education no longer necessarily meet the expectations of young people who wish to acquire applied medical knowledge. Perhaps we have forgotten how to support and accompany talented young people. At one time or another, most of the young professionals we train tend to lose their motivation and to settle into a life that is more tied



to routine and less daring. We need to rekindle this passion for research, and immunotherapy has come at just the right time! Suddenly there is so much to invent and to develop. I hope to be part of the generation that can motivate young professionals so that this passion is not lost.

Hope is nourished by constant encouragement, support through scholarships, and guiding by mentors. This is precisely the role played by the ISREC Foundation, which awards scholarships for biology and medical students.

Your remark is in line with one of our current projects, namely the MD-PhD program. Being able to identify young talents is one of the concerns of the ISREC Foundation.

This training program is very important. We need more and more physicians who are able to understand a research article and

then to implement it for the benefit of the patient. Internationalism is another essential factor. If scientists feel the need to go abroad to develop their skills, it is absolutely necessary to mobilize the means to follow and support them, so that they are willing to return to Switzerland afterwards. Medical training has a reputation for being boring, difficult, competitive, even very competitive, and this frightens young people. This image must change and young people need to be encouraged. Scholarships are in short supply and there is not enough time set aside for research. It is very important to offer students the necessary space to devote themselves to research. Most of my MD-PhD colleagues now head a hospital unit and are also professors. This reflects the need and the effectiveness of combined laboratory and clinical work.

As might be expected, research is not only performed in academic laboratories. Excellent research is also accomplished in the private sector and in industry. But nothing has ever been as disinterested and direct as academic research. It is smart and low cost, and it asks the right questions without having to worry about marketing or market access. An academic study to validate a drug (the final randomized trial) costs ten times less than a pharmaceutical study.



MD-PhD Program

The MD PhD program is designed for motivated and inquisitive medical students who wish to become medical scientists and pursue an academic career combining clinical practice and research. This program enjoys continuous and growing support from most clinical departments in the medical institutions. These adapt their curriculums to provide time for research.

Students enroll in this program during their third or fourth year of medical school. They undergo preparatory training, consisting of selected courses and lab internships. Concurrently, the students search for the lab and research project that best suits their long-term interests. On average, the doctoral phase of the program lasts four years. Most of the MD-PhD students then undergo clinical training, with up to 25% of their time set aside for research. At the end of their training, they receive a doctorate

in medicine and natural sciences and can choose to pursue a predominantly clinical or scientific research career. Whatever their choice, they establish an indispensable bridge between the clinic and experimental research.

The aim of this program is to train highly qualified young researchers in biomedical sciences. This curriculum enables students to acquire the scientific competences for research focused on diseases, patients or public health. This objective is perfectly in line with the missions of the ISREC Foundation: in 2019, it awarded its first MD-PhD scholarship to Arnaud Bakaric, who works in the laboratory of Prof. Nicolo Riggi at the Institute of Pathology, UNIL-CHUV.

INTERVIEW WITH A DOCTORAL STUDENT



ARNAUD BAKARIC,
28 years old, French-Swiss
dual citizen, holder of an ISREC
Foundation scholarship in
the fourth year of the MD-PhD
program at the Institute of
Pathology, UNIL-CHUV.

Arnaud's research focuses on the
identification of molecular mechanisms
underlying CIC-DUX4 tumor pathogenesis
and aggressiveness.

*«A better
understanding of a disease
allows for more personalized
treatments.»*

**Why does a young medical graduate
become so interested in research
he decides to enroll in a doctoral
program to become a clinical
researcher?**

My interest in biology dates back to the very beginning of my medical training and my first classes in molecular biology. I was immediately fascinated by the quest for a biological understanding of the development of different cancer types, and Prof.

Ivan Stamenkovic's lectures on the molecular pathology of various cancers further spurred my curiosity.

Why cancer research?

Cancer represents one of the major challenges of contemporary medicine, and there is still much to be discovered. My interest in biology has naturally drawn me to anatomical pathology, the medical field that deals with the diagnosis of diseases (such as cancer) so

as to better characterize them and guide and adapt treatments more efficiently. A better understanding of a disease allows for more personalized treatments.

What triggered your interest in research?

During my basic medical training, we memorized lists of symptoms and treatment regimens without necessarily understanding the basic disease mechanisms. I felt quite frustrated and decided to engage in research because it allows me to delve deeper into a given subject and to fully understand it.

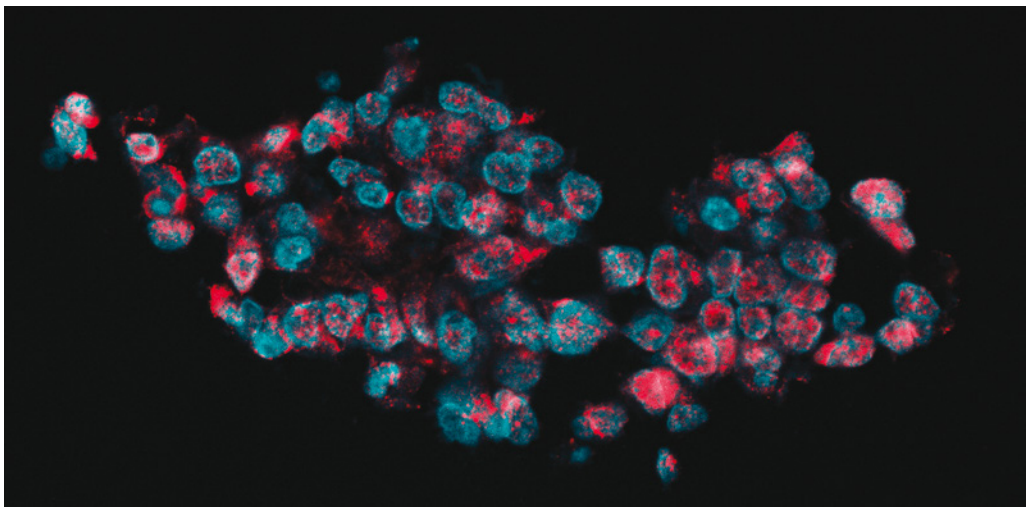
Patients are the ISREC Foundation's first priority and one of its main missions is the training of young scientists. You are the perfect illustration of this link between the medical world and the laboratory. Please tell us about your research project.

I am studying a type of sarcoma that mainly affects children and young adults. This disease, discovered quite recently, is still poorly understood. It is rare but extremely aggressive. My goal is to understand why this tumor develops and why it is so aggressive. And based on this bio-

logical knowledge I hope to be able to develop a more specific and targeted treatment. I work with cancer cells cultured in the lab or taken directly from patient tumors. Using sequencing methods that enable a better understanding of the organization of the genome, I am trying to identify the mechanisms that promote the proliferation of these cells and to determine how these processes can be repressed.

The ISREC Foundation depends on donations. Do you have a message for our donors?

I am very honored that the ISREC Foundation supports the study of a rare pathology. Because this disease is so aggressive, we need funds to develop effective treatments. We are now in the fortunate position of being able to set up a very serious study and to let patients benefit from new therapies as quickly as possible. I wish to thank the ISREC Foundation and its donors from the bottom of my heart.



HIGHLIGHTS IN 2019



May 9th **55 years of supporting cancer research projects**

In 2019, the ISREC Foundation celebrated 55 years of supporting cancer research projects. We had the pleasure of marking this anniversary by hosting an evening event in collaboration with the « Visions du Réel » festival. It was an opportunity to look back on 55 years of service to cancer research. Among the 150 guests were numerous scientists of the Institute, some of whom had witnessed the beginnings of ISREC.

June 23rd **9th edition of the AGO Trophy in Saint-Prex**

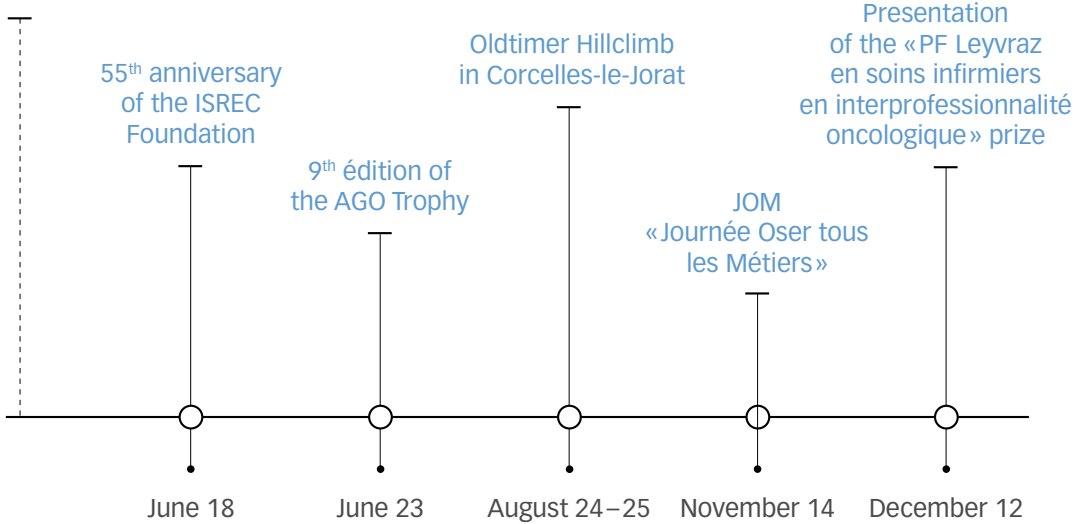
The 9th edition of the **AGO Trophy** took place on June 23, 2019. This sports event is dedicated to raising funds for the fight against cancer, and its proceeds go to the ISREC Foundation and various other associations.

For the 9th consecutive year, more than 50 volunteers contributed to the success of this event in memory of their friend Agostino, who died of cancer. Nearly 200 par-

Key events in 2019

February 4

World Cancer Day



June 23rd
9th édition of the AGO Trophy

ticipants and an equally large audience attended this wonderful event. In 9 years of loyalty to the memory of their friend, more than CHF 71 000.– have been donated to the

ISREC Foundation; a precious contribution that imparts additional meaning to our work.



November 14th — JOM «Journée Oser tous les Métiers»

August 24th–25th 22nd edition of the Oldtimer Hill Climb in Corcelles-le-Jorat

The **Club Team Girard**, consisting of owners, pilots and connoisseurs of old motorcycles, has been organizing annual «Oldtimer» events since 1998. In 2019, approximately 130 pilots, including 35 teams with sidecars (most of which were built before 1985), gathered for the 22nd edition of this race. The ISREC Foundation is honored to be among the beneficiaries of this event, which, to date, has donated CHF 45 500.– to cancer research.

November 14th «Journée Oser tous les Métiers 2019»

The ISREC Foundation is pleased to have been able to provide the CHUV with the infrastructure of the AGORA Cluster for the «Journée Oser tous les Métiers 2019». The aim of this event, initiated by the Equal Op-

portunities Office, is to encourage young people to discover new professional worlds and not to limit themselves to sectors traditionally considered male or female-specific. It is also an opportunity for children to come into contact with the world of work for the first time. 380 young people were thus able to take part in the many activities related to hospital professions.



November 14th — JOM



December 12th — Catherine Labouchère, president of the ISREC Foundation, presents the «Pierre-François Leyvraz» prize

December 12th «Prix Pierre-François Leyvraz»

On the occasion of the retirement of Prof. Pierre-François Leyvraz, Director General of the CHUV, Catherine Labouchère had the honor of launching a prize in his name, in recognition of his unwaning commitment to our Foundation Council over the past seven years. The **«Prix Pierre-François Leyvraz en soins infirmiers dans le domaine de l'interprofessionnalité en oncologie»** is awarded to players in the care sector, in the area of interprofessionalism in oncology, a field that is of great importance for patient care and support.

Scientific conferences, symposia and events

In 2019, approximately 100 events, symposia and scientific lectures took place in the Paternot Auditorium and the lecture halls of the AGORA Center. Most of these activities were directly related to research and oncology.



December 12th — Prof. Pierre-François Leyvraz with Rebecca Ruiz, member of the Conseil d'État of the Canton of Vaud (DSAS)

The ISREC Foundation will continue to prioritize the field of oncology, so as to reflect its two main missions in the activities of the AGORA cluster; namely the support of experimental, translational and clinical cancer research, as well as the encouragement of young scientists and medical practitioners in this field.

Many thanks to the countless people who are committed to our Foundation's cause.

SUPPORTED PROJECTS

Young Scientists

The ISREC Foundation supports PhD students working in the fields of biology and medicine. This funding is possible thanks to two types of grants:

- **«Allocated grants»,** awarded to top students wishing to enroll in a doctoral program in biology or medicine. They are made possible by donations from physical or moral persons. The Foundation guarantees that the funds are used in full to finance the project to which they have been allocated.
- **«ISREC grants»,** or financial support from the ISREC Foundation for a thesis. These grants are awarded to the best students wishing to enroll in a doctoral program in biology or medicine. They are financed thanks to donations, legacies and successions.



In 2019, the ISREC Foundation supported the PhD work of six students:

EFE ERDES

**Lab of Prof. Nathalie Rufer,
Oncology Department, CHUV**

*Molecular Mechanisms Regulating TCR
Affinity-Improved T Cells for Cancer*

This «ISREC grant», amounting to CHF 80 000.– per year, was awarded in June 2015 for four years.

AMÉLIE CACHOT

Lab of Prof. Pedro Romero, LICR@UNIL

*Killer CD4 T Cells: Analysis of a Novel
T Cell Candidate for Human Tumor
Immunotherapy*

This «ISREC grant», amounting to CHF 80 000.– per year, was awarded in January 2016 for four years.

All scientific summaries are available online:
www.isrec.ch/en/the-research

**DANIELA CROPP**

Lab of Dr. Grégory Verdeil, Department of Fundamental Oncology, UNIL

Study of the Role of NFAT5 in Tumor-Specific T Cells

This «ISREC grant», amounting to CHF 80000.– per year, was awarded in April 2019 for four years.

SILVIA PODAVINI

Lab of Professor Margot Thome Miazza, Biochemistry Department, UNIL

Biochemical Identification and Characterization of PD1 Signaling Components

This «ISREC grant», amounting to CHF 80000.– per year, was awarded in August 2019 for four years.

ANDREA AGNOLETTO

Lab of Prof. Cathrin Brisken, EPFL/SV/ISREC

Androgen Receptor Signaling in the Normal Breast Epithelium and in Estrogen Receptor Alfa Positive Breast Cancer

This «ISREC grant», amounting to CHF 80000.– per year, was awarded in September 2019 for four years.

ARNAUD BAKARIC

Lab of Prof. Nicolo Riggi, Institute of Pathology UNIL-CHUV

Identification of Molecular Mechanisms Underlying CIC-DUX4 Tumor Pathogenesis and Aggressiveness

This «MD-PhD ISREC scholarship», amounting to CHF 60000.–, was awarded in November 2019 for a period of one year.

Translational Research

Translational research projects encourage collaborations involving basic and clinical research. Their goal is to study cells and their interactions with the environment, and to provide impulses for novel therapies and clinical approaches designed to act on the causes of cellular malfunction. Financial support for translational cancer research projects is possible thanks to two different types of subsidies:

- **«ISREC Chairs»**
The purpose of these chairs is to offer young professors affiliated to the EPFL (School of Life Sciences – ISREC) or to a Swiss university (faculty of biology or medicine) the opportunity to launch their research careers. They are financed through the fortune of the Foundation.
- **«Allocated Funds»**
These funds from private donations are specifically created for each project and must solely be used for their predetermined purpose. The Foundation guarantees that donations are used in full to finance the project to which they have been allocated.



In 2019, the following chairs were financed by the ISREC Foundation:

Decoding the Genetics of Lymphoma for the Development of New Therapies

This translational oncology chair, endowed with CHF 500 000.– per year, was allocated in November 2014 for a period of six years. It was awarded to the research group of Prof. Elisa Oricchio (EPFL/SV/ISREC).

Molecular Cancer Immunotherapy and Immune Engineering

This translational oncology chair, endowed with CHF 500 000.– per year, was allocated in June 2015 for a period of six years. It was awarded to the research group of tenure track Prof. Ping-Chih Ho (UNIL/LUDWIG).



Team SUR/SRP 2019

Projects supported in 2019:

Flash Radiotherapy

This «allocated fund» derived from a donation of the Biltema Foundation and amounting to € 1 000 000 was granted in July 2016 for three years, for the research performed in the lab of Prof. Jean Bourhis (CHUV/RTH).

Personalized Immunotherapy

This «allocated fund» derived from a donation of the Biltema Foundation and amounting to € 2 400 000 was granted in July 2016 for three years, for the research performed in the lab of Prof. George Coukos (CHUV/UNIL/LICR).

Development of Antibody Therapies for Solid Tumors and Acute Myeloid Leukemia

This «allocated fund» derived from a donation of the Biltema Foundation and amounting to € 3 300 000 was granted in July 2016 for three years, for the research performed in the lab of Prof. Carl Borrebaeck (Lund University, Sweden), in collaboration with the research teams at the LICR Lausanne Branch.

Breast Cancer

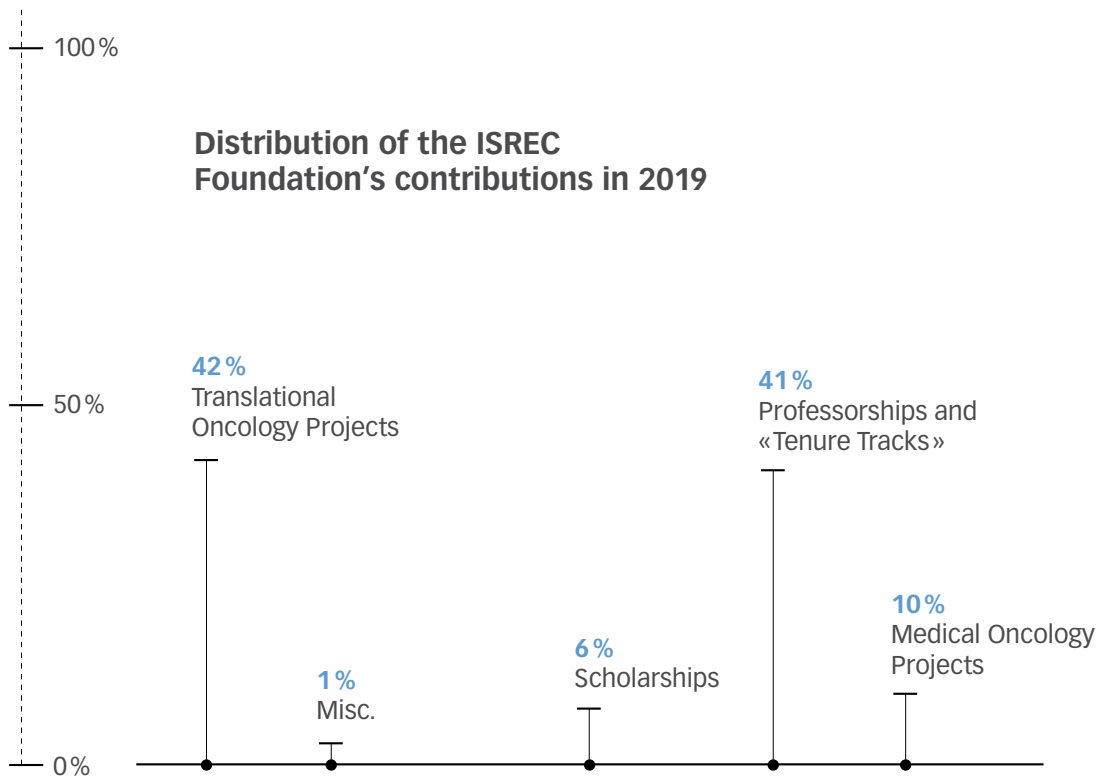
This «allocated fund» derived from a donation of the Biltema Foundation and amounting to € 900 000 was granted in July 2016 for three years, for the research performed in the labs of Professors Ake Borg (Lund University) and Catherine Brisken (EPFL/SV/ISREC) on the one hand (research on ER+ breast cancer), and the labs of Professors Douglas Hanahan (EPFL/SV/ISREC) and Kristian Pietras (Lund University) on the other hand (research on triple negative breast cancer).

Immune Engineering

This «allocated fund» derived from a donation of the Biltema Foundation and amounting to € 1 700 000 was granted in July 2016 for three years, for the research performed in the labs of Professors Matthias Lutolf, Philippe Renaud, Hatice Altug and Harm-Anton Klok (EPFL/IBI), in collaboration with the research teams at the LICR Lausanne Branch.

Immune Engineering: Platform for the Development of T-Cell-Based Immune Therapies

This «allocated fund» derived from a donation of the Biltema Foundation and amounting to € 1 170 000 was granted in July 2016 for three years, for the research performed in the lab of Prof. George Coukos (CHUV/UNIL/LICR).



continued

A Phase I Clinical Trial Assessing Prophylactic Infusion of Donor CD45RA-Negative Memory – Effector T Cells into Patients Transplanted with Hematopoietic Stem Cells from Haploidentical Donors After Reduced Intensity Conditioning

This «allocated fund» from the Symphasis charitable umbrella foundation, amounting to CHF 77 000.–, was awarded to Dr. Anne-Claire Mamez from the Geneva University Hospitals (HUG) in April 2018 for four years.

Results Reported by Patients for the Early Detection of Adverse Effects Linked to the Immune System

This «allocated fund» for nursing research, derived from a private donation and amounting to CHF 1 000 000.–, was awarded to Professors Olivier Michielin and Manuela Eicher in November 2018 for three years (CHUV).

Deciphering Tumorigenesis Driven by Replication-Associated DNA Damage

This «Allocated Fund in Genetics and Genomics», amounting to CHF 140 000.–, was granted in January 2019 to Prof. Massimo Lopes (University of Zurich) and to Prof. Achim Weber (University Hospital Zurich) for two years.

Investigating the Functional Role of Cellular Phenotypes in Melanoma Targeted Therapy

This «allocated fund in oncogenic signaling», amounting to CHF 140 000.–, was granted in January 2019 to Prof. Reinhard Dummer (Department of Dermatology, University Hospital Zurich) and Prof. Lukas Sommer (Institute of Anatomy, University of Zurich) for two years.

Immunotherapy for Relapsed-Refractory Pediatric and Young Adult B-Cell Precursor Acute Lymphoblastic Leukemia: CAR-T Cell Clinical Trial Development

This «allocated fund in pediatric oncology», amounting to CHF 856 740.–, was awarded to Dr. Francesco Ceppi (CHUV) in September 2019 for three years.

Scientific Events

In 2019, the ISREC Foundation supported **7 students** participating in the 10th SUR/SRP «Summer Research» program, a collaboration between the UNIL and the EPFL. This summer scientific work placement took place between July 8 and August 29 in the labs of the two institutions. For students, this is a memorable and rewarding experience, which, for some, will have an impact on their future study plans. As for the host labs, they are offered the opportunity to discover brilliant students who might return for a master's or a PhD degree. Congratulations to all these promising students!

All scientific summaries are available online: www.isrec.ch/en/the-research

The Foundation consists of the following bodies

THE FOUNDATION COUNCIL

The Foundation Council is the highest managing authority of the Foundation. It allocates resources, appoints its own members, those of the Scientific Board and the Management, as well as the Financial Auditors. It approves the annual budget and the Foundation accounts.

President

Catherine Labouchère

Jurist, delegate of the Canton of Vaud parliament

Members

Yves Henri Bonzon

Head Investment Management
CIO and member of the Executive Board,
Julius Bär

Prof. Franco Cavalli

Representative of the Scientific Board,
Scientific Director, IOSI (Istituto Oncologico
della Svizzera Italiana, Bellinzona)

Prof. Pierre-Marie Glauser

Lawyer and professor of tax law
at UNIL (University of Lausanne), associate
at Abels Oberson SA

Prof. Philippe Eckert

General Director, CHUV
(Centre Hospitalier Universitaire Vaudois)

Prof. Philippe Moreillon

Former Vice-Rector, UNIL (University
of Lausanne), professor emeritus

Dr. Thomas W. Paulsen

CFO, Chief Financial Officer, Head
of Finance and Risk Division, Banque
Cantonale Vaudoise, Lausanne

Prof. Béatrice Schaad

Director of the Communications
Department, CHUV (Centre Hospitalier
Universitaire Vaudois)

Prof. Andreas Tobler

Former medical director of the Inselspital
in Bern and the Insel Gruppe AG,
member of the board of the University
Hospital Zurich

Prof. Didier Trono

Full Professor, GHI (Global Health Institute),
EPFL (École Polytechnique Fédérale
de Lausanne)



THE SCIENTIFIC BOARD

The Scientific Board is composed of experts of international renown in various fields of cancer research. They cannot be a member of the Foundation Council, with the exception of the president of the Scientific Board, by virtue of his position. Assisted by the Scientific Board, the Management selects the research projects to be funded, and presents its proposals to the Foundation Council.

President

Prof. Franco Cavalli

Director, IOSI (Istituto Oncologico della Svizzera Italiana)

Members

Prof. Fabrice André

Research director, responsible for the U981 unit of the INSERM, Medical Oncology Department, Institut Gustave Roussy, Villejuif, France

Prof. Dr. Michael N. Hall

Professor at the Biozentrum, University of Basel

Prof. Peter Johnson

Professor of medical oncology, Faculty of Medicine, University of Southampton, UK

Prof. Dr. Anne Müller

Associate Professor in experimental medicine, Institute for Molecular Cancer Research, University of Zurich

THE MANAGEMENT

Assisted by the Scientific Board, the Management selects the research projects to be funded. It develops and recommends a fundraising strategy and performs the tasks defined by the Foundation Council.

Prof. Francis-Luc Perret, Director

Mme Aylin Niederberger, Administrative and Financial Director

THE FINANCIAL AUDITORS

The financial auditors, whose tasks are determined by law, are nominated by the Foundation Council. They are elected for one year. The 2019 mandate was entrusted to **Ernst & Young SA** in Lausanne, a fiduciary company recognized by the Swiss Institute of Certified Accountants and Tax Consultants.

BOOK OF DONORS

Since 1964, numerous donors have supported our cause through their gifts, subsidies or legacies and have contributed to the progress of cancer Research.

We are very grateful and thank each one of them most warmly.

Among these donors, more than six hundred appear
in our Book of Donors:

MORE THAN ONE MILLION FRANCS

Two anonymous gifts / One anonymous legacy, Lausanne / Legacy Mrs. Anne B., Lausanne / Mrs. Annette B., Vevey / Mrs. Anne-Laurence B., Prêverenges / Legacy Mrs. Wilhelmine B., Lausanne / Biltema Foundation, Amsterdam / Mr. Dimitri D., Pully / Mrs. Hilda D., Colombier / Mrs. Johannette G., Lausanne / Göhner Foundation, Zug / Mrs. Jeanne H., Neuchâtel / Mr. Jean-Pierre H., St-Imier / Mrs. Henriette H.-C., Lausanne / Legacy Mr. Hans H., Vuillens-le-Château / Helmut Horten Foundation, Lugano / Istanjac Foundation, Triesen / Lardeco Foundation, Vaduz / Lartek Limited, Bermuda / Le Laurier Rose Foundation, Lausanne / Leenaards Foundation, Lausanne / Swiss Cancer League, Bern / Loterie Romande, Lausanne / Legacy Mr. Emile M., Bursins / Legacy Mrs. Marie M., Marin / Nouvelle Cassius Foundation, Vaduz / Mrs. Judith P., Lausanne / Mr. Yves J. P., Verbier / Pestalozzi Foundation, Road Town / Porthos Foundation, Triesen / Mrs. Martine Monique R., Geneva / Mr. Eric S., Neuchâtel / Sevastopoulo Fund, Lausanne / Mr. Marc V., Lausanne / Canton Vaud

BETWEEN CHF 100 000.- AND ONE MILLION FRANCS

Thirty-four anonymous gifts / Aiuto Foundation, Nyon / Canton Aargau / Mrs. Adelheid Gertrud B., Hilterfingen / Mrs. Anne B., Prêverenges / Mrs. Charlotte B., Romanel / Mrs. Dina Henriette B., Vevey / Mrs. Elise B., Chailly-s/Montreux / Succession Mme Jacqueline B., Paris / Canton Bern / Mrs. Anne-Marie C., La Tour-de-Peilz / Mrs. Florence Helen C., La Tour-de-Peilz / Mrs. Jeannette C., Vevey / Mrs. Suzanne C., Prilly / José Carreras pour la lutte contre la leucémie Foundation, Meyrin / Ceres Foundation, Carouge / Copley May Foundation, Geneva / Câbleries et Tréfileries de Cossonay / Ciba-Geigy SA, Basel / Mrs. Ida d'A., Lausanne / Mrs. Catherine D., Montreux / Mrs. Clara D., Montreux / Mr. Damien D., Lausanne / Legacy Mrs. Doris Ursula D., St-Sulpice / Mr. Henri D., Monaco / Mr. Irmgard D., Locarno / Legacy Mrs. Perdrix D., Montreux / Mr. Marcel D., Lausanne / Mrs. Simone D., Lausanne / Mrs. Elisabeth E., Geneva / Echec au cancer de la Broye, Payerne / Mrs. Bertha F., Yverdon / Mrs. Lilia F., Lausanne / Legacy Mrs. Alma Maria F., Petit-Lancy / Legacy Mrs. Emma Germaine F., Orbe / Alfred Fischer Foundation, Lausanne / François Guédon Fiduciaire & Gérance SA, Lausanne / Canton Fribourg and Ligue fribourgeoise contre le cancer / Mrs. Andrée Lucienne G., Pully / Mrs. Esmeralda G., Lausanne / Mr. Louis G., Prilly / Legacy Mrs. Aline G., Kirchberg / Legacy Mrs. Antoinette G., Colombier / Legacy Mrs. Claudine G. L., Lausanne / Gygi-Beguign Fund, Lausanne / Canton Geneva / Mrs. Elvine H., Montreux / M. Georg Philip H., Leipzig / Mrs. Liise H. / Mr. René H., Lausanne / Heskem Foundation, Vaduz / Hoffman-La Roche & Co, Basel / Mrs. Alice J., Pully / Mrs. Marguerite J.-K., Lausanne / Canton Jura / Mrs. Consuela K., Lausanne / Mrs. Laura L., Spanien / Mrs. Marthe L., Lausanne / Mr. Pierre Louis L., Lausanne / Mrs. Yvette L., Vevey / Ligue vaudoise contre le cancer, Lausanne / Municipalité de Lausanne / Mr. Karl Heinz M., Krienz / Mrs. Lillianne M., Lausanne / Mrs. Marie-Louise M., Corsier / Mrs. Marthe M., Lausanne / Mrs. Odette M., Lausanne / Mr. Roland M., Cugy / Legacy Mrs. Marie M., Vevey / Legacy Mrs. Louisa M., Lausanne / Legacy Mrs. Monique M., Lausanne / Legacy Mrs. Raymonde M., Lausanne / Medic Foundation, Geneva / Migros Genossenschafts-Bund, Zurich / Mrs. Denise Alice N., Neuchâtel / Nestlé SA, Vevey / Canton Neuchâtel / Oiseau Bleu Foundation, Vaduz /

Orfeo Foundation, Vaduz / Mrs. Elisabeth P., Neyruz / Mr. Franz P., Coppet / Mrs. Marie-Louise P., Lausanne / Mrs. Marthe P., Lutry / Mr. Pierre P., Estavayer-le-Lac / Jacqueline Petit Foundation, Lausanne / Fondation de bienfaisance de la Banque Pictet & Cie, Carouge / Mrs. Louise Q., Renens / Mr. Georges R., Paris / Mrs. Nina R., Pully / The Rose Charitable Trust, United Kingdom / Mr. Edouard-Marcel S., Lausanne / Mrs. Georgette S., Geneva / Mrs. Paulette S., Denens / Mrs. Rosalie S., Montreux / Mr. and Mrs. S.-B., Sierre / Legacy Mrs. Martha S., Yverdon / Canton St-Gallen / Miss Suzanne-Marie T., Payerne / Michel Tossizza Foundation, Lausanne / Tetra Laval International, Pully / Mrs. Evelyne V., Lausanne / Mrs. Gabriella Maria W., Geneva / Mrs. Henriette W., Lausanne / Mrs. Mona W., Geneva / Mrs. Nina W., Lonay / Prof. Dr h.c. René W. (Castolin SA), St-Sulpice / Canton Valais / Mrs. Gertrud Z., Münchenstein / Mr. Walther Willy Z., Montreux / Canton Zurich

BETWEEN CHF 50 000.- AND CHF 100 000.-

Thirteen anonymous gifts / Mrs. Alice A., Moutier / Mrs. Yvette A., Vevey / Mr. Bernard B., Bournens / Mr. Ernesto B., Geneva / Mrs. Germaine B.-R., Aubonne / Mr. Giovanni B., Lausanne / Mrs. Liliane B., Lausanne / Mrs. Marie B., Pully / Mrs. Rachelle B., Montreux / Canton Basel-Landschaft / Borel & Barbey, Geneva / Mrs. Alice E. C., Orbe / Mrs. Fernande C., Lausanne / Mr. Marcel C., Lausanne / Mrs. Teresa C.-R., Zurich / Mrs. Violette C., Lausanne / Centrale Suisse des Lettres de Gages (Plandbriefzentrale), Bern / Chafee Foundation, Schaan / Mrs. Ariane D., Geneva / Mr. Jean D., Biel / Mrs. Martine D., Lausanne / Mrs. Raymonde D., Morges / Mrs. Fernande D.-A., Les Cullayes / Mrs. Marie E.-B., Crans-près-Céligny / Jules & Irène Ederer-Uehlinger Foundation, Bern / Emouna Foundation / Mrs. Arlette F., Vevey / Mrs. Josette F., Neuchâtel / Fabrique de Câbles Electriques, Cortaillod / Mrs. Claudine G., New York / Mrs. Dorothea G., Lausanne / Mrs. Lidia G., Echallens / Mrs. Liliane G., Aubonne / Mr. Jean-Charles H., Geneva / Mrs. Marie Juliette Simone H., Geneva / Mrs. Renée H., Lausanne / Prof. Gustave J., Zurich / Mrs. Margarete J., Lausanne / Mrs. Marie-Louise J., Renens / Mrs. Hedwige Meinrada L.-G. / Les Halliers Foundation, Le Mont-sur-Lausanne / Lombard Odier Foundation, Geneva / Cancer league Valais, Sierre / La Suisse Assurances, Lausanne / Mrs. Marianne M., Lausanne / Mr. Eugen M.-M., Kilchberg / Nirmo Foundation, Triesen / Nutresco SA, Penthalaz / Mrs. Andrée P., Lausanne / Mrs. Madeleine P., Bulle / Mrs. Etienne Q. da F., Lausanne / Mrs. Gabrielle R., Aubonne / Mrs. Marianne R.-B.-J., Fleurier / Mrs. Anne-Marie S., Romanel / Legacy Mrs. Denise S., Bussy-Chardonney / Charles Schwab & Co., Inc., San Francisco / Sinpro SA, Lausanne / Trophée Ago, Lonay / Mrs. Anne-Marie U., La Chaux-de-Fonds / Mrs. Madeleine V., Les Paccots / Charles Veillon Foundation, Lausanne / Mrs. Corinne W., Lausanne / Mr. Pierre Z., Lausanne / Legacy Mrs. Stella Z., Lausanne



BETWEEN CHF 5000.- AND CHF 50 000.-

Fifty-two anonymous gifts / Mr. Emile A., Auvernier / Dr. Etienne A., Lausanne / Mr. Georges A., Colombier-sur-Morges / Mrs Jacqueline A., Lausanne / Mrs. Marie A.-D., Lausanne / In memory of Mr. Etienne A., Penthaz / Annah 2 Foundation, Panama City / Albion House Ltd, Lausanne / Alcoa International SA, Lausanne / André & Cie SA, Lausanne / Canton Appenzell Ausserrhodan / Mr. Aimé B., Boudry / Mr. Albert B., Lausanne / Miss Alice and Miss Hélène B., Lausanne / Mr. Benoît B., Lutry / Mrs. Charlotte B., Prilly / Mrs. Clara B., Veytaux / Mrs. Dorothee B., La Chaux-de-Fonds / Mrs. Elisabeth B., Lausanne / Mrs. Emma B., Bern / Mrs. Fidela B., Clarens / Mrs. Jeanne B., Romanel / Mr. Louis B., Pully / Mrs. Lucie B., La Tour-de-Peilz / Mr. Maurice B., Lutry / Mrs. Mireille B., Pully / Mrs. Nicky B., Bulle / Mrs. Nicole B., Lausanne / Mrs. Odile B., Lens / Mrs. Reina B., Prilly / Mrs. Rosa B., Cossonay / In memory of Mr. Ulysse B., Lutry / Mrs. Yvonne Edmée B., Auvernier / Legacy Mrs. Marianne B., Yverdon / Bhema Vaduz Foundation, Neuchâtel / Action cancer des boulangers / La Bâloise Assurances, Basel / Banque cantonale vaudoise, Lausanne / Banque Vaudoise de Crédit, Lausanne / Baumgartner Papiers SA, Lausanne / Bobst & Fils SA, Lausanne / Boillat SA, Reconvierville / Brauchli SA, Lausanne / Company Paul Bucher, Basel / Mrs. Anne-Marie C., Lausanne / Mr. Ernest C., Villeneuve / Mrs. Eveline C., Ecublens / Mr. François C., Meggen / Mr. Frédy C., Prilly / Mr. Jean C., Bern / Miss Juliette C., Lausanne / Mrs. Nelly C.-B., Prilly / Mr. Stefan C., St-Légier / Legacy Mrs. Jacqueline C., Clarens / Association des Câbleries Suisses, Zurich / Caisse d'Epargne du District de Cossonay / « Comeback » des motards, Lausanne / Copycolor SA, Renens / Couvent de Sainte Ursule, Sion / Mr. Albert D., Vevey / Mrs. Alice D., Lausanne / Mr. Armand D., Penthaz / Mr. Constant D., Lausanne / Mr. Emile D., Châtel-St-Denis / Mr. and Mrs. Ernest D., Echichens-sur-Morges / Mrs. Estelle D., Jouxtenis / Mr. Gian Andrea D., Epalinges / Legacy Mr. Jean D., Peseux / Mrs. Lily D., Lausanne / Mrs. Livia D., Montreux / In memory of Mr. Xavier D., United Kingdom / Mrs. Yolande de M., Epalinges / Miss Simone de M. d'A., Lausanne / Mrs. Aïda de P. M., Lonay / In memory of Miss Floriane du B., Les Ponts-de-Martel / Legacy Mrs. Pierrette D., Lavaux-Oron / Schweizerische Stiftung für den Doron-Preis, Zug / Delta Securities, Guernsey / Régie De Rham, Lausanne / Edouard Dubied & Cie, Neuchâtel / DuBois Invest LLC, Sierre / Mrs. Marie E., Vevey / Mr. Roger E., Vevey / Empiris Foundation, Zurich / Ebauches SA, Neuchâtel / Ecole Hotelière de Lausanne / Ernst & Young, Lausanne / Etablissement cantonal d'assurances, Pully / Municipalité d'Epalinges / Mrs. Francisca F., Lausanne / Mrs. Jacqueline F.-G., Lausanne / Mrs. Janine F., Yverdon / Mr. Jules F., Payerne / Mr. Pierre F., Romont / Mr. Ruedi F., Gümliigen / FPH (Foundation pour le Progrès de l'homme), Lausanne / Fabrique d'Assortiments Réunis, Le Locle / Fabrique de Câbles de Brugg / Mrs. and Mr. Caroline and Patrice G., St-Sulpice / Mr. Daniel G. / Mrs. Genifer G., La Tour-de-Peilz / Miss Germaine Marie G., La Tour-de-Peilz / Mrs. Hilda G., Morges / Mr. Johannes G., Lausanne / In memory of Mr. Mario G., Bern / Mr. Roger G., Lonay / Mr. Sven G. / Mrs. Violette G., Lausanne / Legacy Mrs. Claudine G., Morges / Grande Kermesse de la jeunesse pour la lutte contre le cancer, Geneva / La Genevoise Assurances, Geneva / Galenica AG, Bern / Golay-Buchel & Co, Lausanne / Kanton Glaris / Mrs. Claire-Marguerite H., Geneva / Mr. Ernst H., Biel / Mr. Feras H., Dubai / Mr. Gérard H., Lausanne / Legacy Mr. Gérard H., Les Diablerets / Mr. Gustav H.-M., Schaffhausen / Mr. Hans H., Vufflens-le-Château / Mrs. J. H., Geneva / Miss Marguerite H., Lausanne / Mrs. et Mr. Marianne et Walter H.-D., Corseaux / Mrs. Violette H., La Tour-de-Peilz / Mrs. Yvette H., Lausanne / Louise Helfferich Fonds, Lausanne / Sources Minérales Henniez / Mrs. Ginette I., Pully / In memory of Mr. Heinz I., Lausanne / Imprimeries Réunies SA, Lausanne / Ingeni SA, Lausanne / Integra Biosciences AG, Wallisellen / Interfood SA, Lausanne / Mrs. Elizabeth J., Montreux / Mrs. Germaine J., Renens / Mr. Hermann J., Ste-Croix / Mrs. Joséphine J., Sierre / Mr. Olivier J. G., Lausanne / Mrs. Suzanne J., Sion / Juchum Foundation, Lausanne / Mrs. Alice K., Grandvaux / In memory of Mrs. Betty K., Geneva / Mrs. Rose K., Crans-près-Céligny / Idryma Georges Katingo Lemos Foundation, Lausanne / Kodak SA, Lausanne / Mrs. Alice L., Payerne / In

memory of Mr. Charles-Edouard L., Gilon / Mrs. Connie E. F. L., Zurich / Mrs. Jane L., Lausanne / Mr. Jean-Pierre L., Bournens / Mr. Oskar L., Meiringen / Mr. Roger L., Lausanne / Mr. Hans L.-B., Hasle B. Burgdorf / Mrs. Marcelle L.-H., Montreux / Mrs. Emilie L.-M., Lausanne / Mr. and Mrs. L.-S., Lausanne / Mrs. Sandra L.T., Lausanne / Legacy Mr. Fritz L., Moutier / Ligue genevoise contre le cancer, Geneva / Ligue tessinoise contre le cancer, Locarno / La Boutique d'Occasions, Lausanne / Leclanché SA, Yverdon / Lemo SA, Ecublens / Likno establishment, Vaduz / Lo-Holding Lausanne-Ouchy SA, Lausanne / Mrs. Alice M., Château d'Oex / Mr. Bertrand M., Geneva / Mrs. Charlotte M., Chavornay / Mrs. Francis M., Lausanne / Mr. François M., Lausanne / Mr. J.-M. M., Lausanne / Mrs. Léonie M., Lausanne / Mrs. Marie-Claire M., Lausanne / Mrs. Patricia M., Basel / Mr. Pierre M., Lausanne / Mrs. Nelly M., Rossinière / Mrs. Rachel M., Vevey / Mr. Roland M., Grandvaux / Mr. Rudolf M., Binningen / Mrs. Suzanne M., Renens / Mrs. Viviane M., Corseaux / Mrs. Marthe M.-M., Montreux / Legacy Mr. Eric M., Yverdon / Ernest Matthey Foundation, Pully / Metallwerke AG, Dornach / Mrs. Monique N., Vandoeuvres / Mrs. Angela N.-W., Bern / Legacy Mrs. Anne N., Blonay / Mr. Andréa O., Jouxtenis / Mr. Daniel O., Villars-sous-Yens / Mrs. Marie O.-C., Lausanne / Mrs. Elsy P., Pully / Mr. Emile P., Oron / Mr. Georges P., Morges / Mrs. Ida P., Oulens-sur-Lucens / Mr. Jean P., Lausanne / Mr. Jean-Claude P., Saint-Cierges / Mrs. Jeanne P., Fribourg / Mr. Jules Ernest P., Orbe / Mrs. Marylène P., Lausanne / Mrs. Mireille P., Pully / Mr. René P., Lausanne / Mrs. Rose-Marie P., St-Aubin-Sauges / Dr. Suzanne-Marie P.-R., Lausanne / Legacy Mrs. Violette P., Lausanne / The Pro Aremorica Trust / Payot SA, Lausanne / Philipps AG, Zurich / Publicitas SA, Lausanne / Messrs Alain & Jean-Daniel R., Bern / Mr. Alfred R., Aubonne / Mrs. Alice R., Lausanne / Mrs. Angèle R., Payerne / Mrs. Anne R., Lausanne / Mr. and Mrs. Hans & Hildegard R., Mettmens-tetten / Mr. Hansueli R., Bern / In memory of Mr. Pierre-Laurent R., Pully / Rütli Foundation, Luzern / Rentenanstalt, Zurich / Ramelet SA, Lausanne / Renault Finance SA, Lausanne / Retraites Populaires, Lausanne / Montres Rolex SA, Geneva / Rotary Club, Lausanne / Mrs. Béatrice S., Pully / Mr. Carlo S., Montreux / Mrs. Cécile S., St-Prex / Mrs. Clémence S., Lausanne / Mr. and Mrs. David & Barbara S., Geneva / Mr. G. A. S., Lausanne / Mrs. Jeanne S., La Conversion-sur-Lutry / Mrs. Lucie S., Lausanne / Mrs. Marguerite S., Lausanne / Mrs. Marie S. / In memory of Mrs. Marie-Jeanne S., Zermatt / Mr. Olivier S., Rolle / Mr. Paul-R. S., Lausanne / Mr. Robert Charles S., Laupen / Mrs. Suzanne S., Lausanne / Mr. and Mrs. Joseph S.-G., Laufen / Legacy Mrs. Marie-Louise S. / Sobrate Foundation, Lausanne / Solis Foundation, Le Mont-sur-Lausanne / Symphysis Foundation, Zurich / Société de couture, Savigny / Société de Réassurances, Zurich / Société des Chaux & Ciments de la Suisse Romande, Lausanne / Société Romande d'électricité, Clarens / Supra (SVRSM), Lausanne / Sagrave SA, Lausanne / Sandoz AG, Basel / Carrelages Sassi SA, Corminboeuf / Scheuchzer SA, Lausanne / Schroder & Co Bank SA, Geneva / Sicpa SA, Prilly / Siemens-Albis AG, Zurich / Skilift Parsenn-Furka Klosters AG, Davos Platz / Soroptimist International – Union Suisse, Grandvaux / Sureco Investments SA, Gland / Syslog Informatique SA, Fribourg / Municipalité de Saint-Sulpice / Mr. Alain T., Bex / Mr. Albert T., St-Saphorin-sur-Morges / Mrs. Antoinette T., Nyon / Mr. Georges T., Lausanne / Mr. Jean T., Ste-Croix / Miss Jeanne T., Lausanne / Mr. Luciano T., Milan / Elisabetta and Jacques Tabord Foundation, Lausanne / Team Girard, Palézieux-Village / Telekurs Holding Ltd., Wallisellen / Mrs. Annie U., Towson / Mrs. Anne-Marie U., La Chaux-de-Fonds / Canton Uri / Mr. Benjamin V., Cully / Misses Charlotte & Hildegard V., Davos / Mrs. Constance V., Le Mont-sur-Lausanne / Mrs. Cosette V., Givirins / Mrs. Nelly-Henriette V., Villeneuve / Mrs. Paulette V., Auvernier / Mrs. Andrea V. D., Monthey / Mrs. Rosa V.-J., Lengnau / Vaudoise Assurances, Lausanne / Verrerie de St-Prex SA / Mrs. Emmy W., St-Sulpice / Mrs. Geneviève W., Le Mouret / Mr. Jacques W., Lausanne / Mrs. Lyana Elizabeth W., Montreux / Winterthur Assurances, Zurich / Wander AG, Bern / WnG, Lausanne / Zellinvest SA, Geneva / Zyma SA, Nyon

Impressum

Publication edition Aylin Niederberger
Design Alain Florey — Spirale Communication visuelle

©Photographs

Cover, pp. 10 and 11 Jeanne Martel – CHUV
Pp. 3 and 12 Laurianne Aeby – CHUV
P. 4 Olivier Evard / P. 5 Fehlmann Architectes SA
P. 9 David Matthiessen
Pp. 11, 13, 19, 21, 26, 27, 28 and 30 Fondation ISREC
Pp. 14, 17 and 18 Martenet/L'illustré
P. 24 CHUV / P. 25 Gilles Weber – CHUV / P. 33 Matthieu Gafsou
P. 35 Unsplash

Fondation ISREC

Rue du Bugnon 25A

1005 Lausanne

Tel. +41 21 653 07 16

info@isrec.ch / www.isrec.ch

CCP 10-3224-9